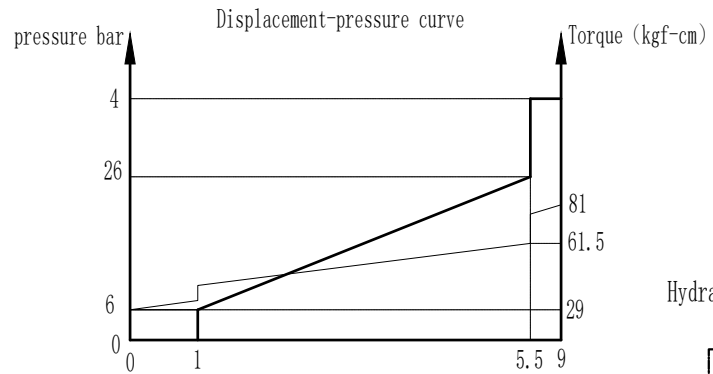
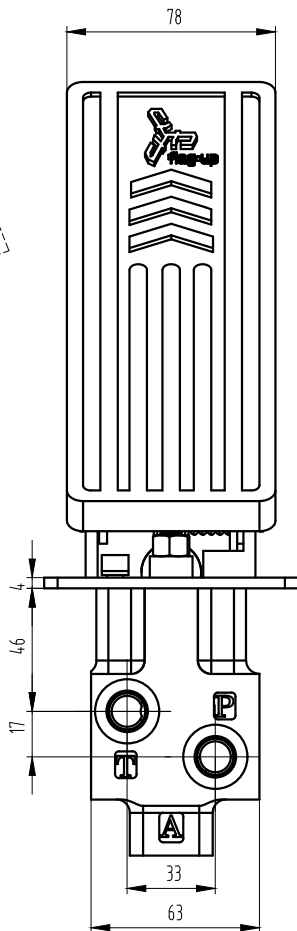
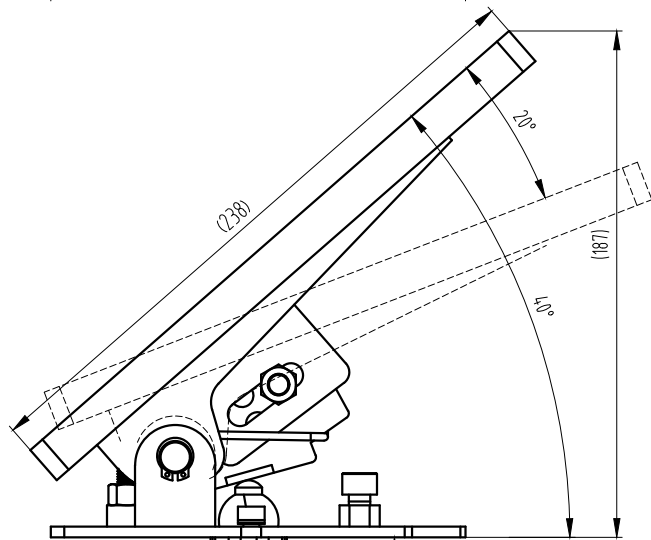
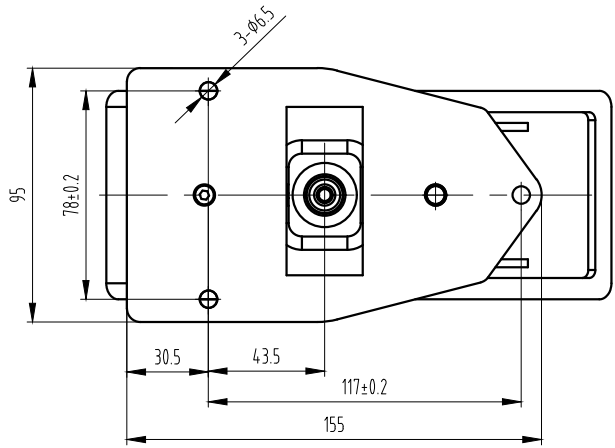
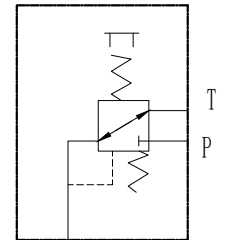


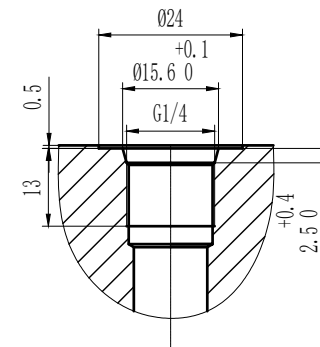
811000133



Hydraulic schematic diagram



Oil port hole pattern diagram



Technical requirements:

1. Maximum pressure: 50 bar
2. Rated pressure: 40 bar
3. T mouth back pressure: 3 bar
4. Use oil: mineral oil
6. the valve body spray black paint; Black rubber pedal
7. viscosity range: 10 ~ 380 mm<sup>2</sup>/s
8. oil temperature: -20°C ~ 80°C
9. Cleanliness: NAS Level 9

|             |                     |           |         |            |          |              |           |            |
|-------------|---------------------|-----------|---------|------------|----------|--------------|-----------|------------|
|             |                     |           |         | FPP-C2-D9  |          |              |           |            |
|             |                     |           |         | Foot valve |          |              |           |            |
| mark number | changed file number | signature | date    | designer   | approver | pattern mark | weight    | proportion |
|             |                     |           |         |            |          |              | 25KG      | 1:2        |
| standard    | date                | 2022/3/21 | version |            |          | visual angle |           |            |
|             |                     |           |         |            |          |              | 811000133 |            |

借通用件登记  
描图  
校描  
旧底图总号  
签字  
日期