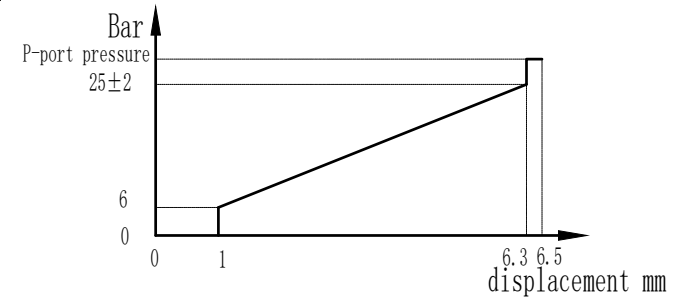
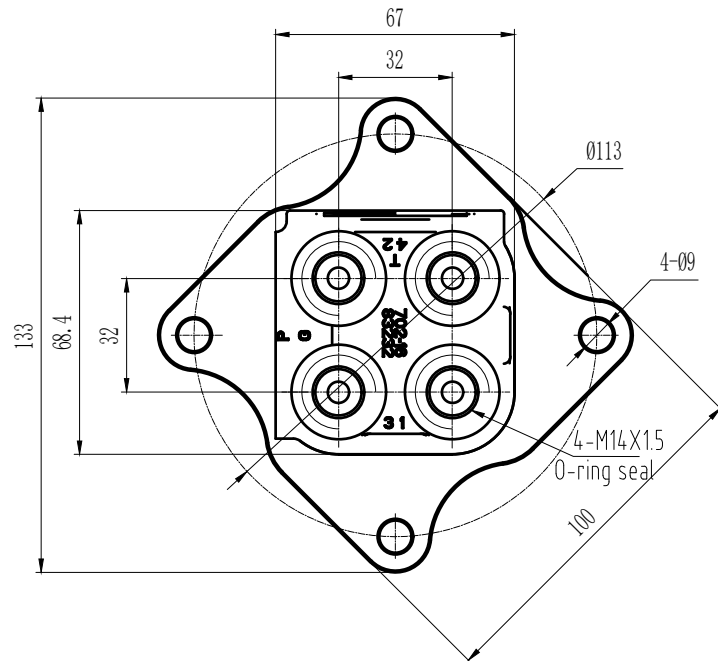
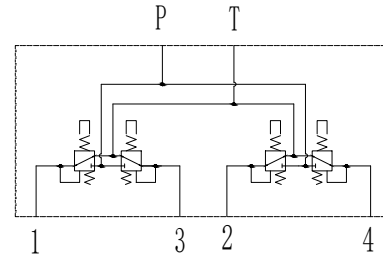


Displacement-pressure curve


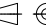
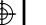


Hydraulic schematic diagram



Technical requirements:

1. Maximum pressure 50 bar
- 2, rated pressure 35 bar
- 3, rated flow 15 L/min
- 4, T mouth back pressure 3 bar
5. Use oil: mineral oil
- 6, viscosity range: 10 ~ 380 mm²/s
- 7, oil temperature: -20°C ~ 80°C
8. Cleanliness: NAS Level 9
- 9, the median state: 4 mouth leakage is less than 100ml/min.
- 10, working state: 4 mouth leakage is less than 600ml/min.

					FPJ-G8-X0			 Ningbo Flag-up Hydraulic		
									Handle (Komatsu)	
mark	number	changed file number	signature	date	designer		approver	pattern mark	weight	proportion
					inspector					1:1.5
					craft					
					standard		date	version	visual angle	 
								810900124		