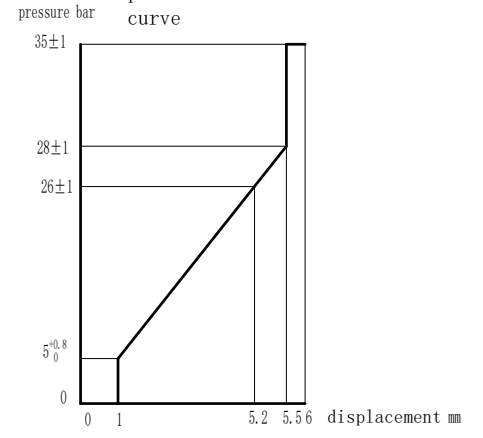


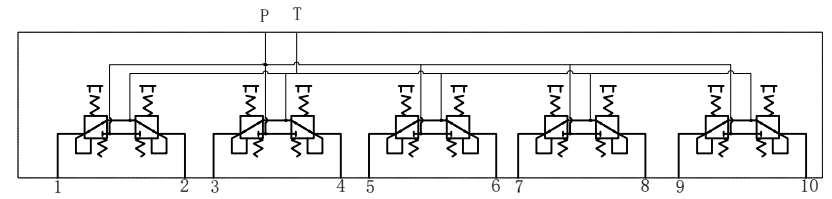
oil port size

Performance curve can be customized according to customer requirements performance curve



(限位点)

Hydraulic Schematic



Technical requirement

1. Before assembly, ensure that each part is qualified to ensure that the cleanliness is within NAS9 level
2. Assembly shall be carried out in accordance with operation instructions
3. Carry out factory test after assembly, drain the oil after passing the test.
4. After the product is drained, wash the oil stains on the surface of the product with stain removal oil
5. After passing the inspection, stick the certificate of qualification and store in the warehouse.

Technical parameter

1. Flow rate: 30L/min
2. Maximum pressure: 10MPa

					FPJ-C5-0-E5			Ningbo Flag-up Hydraulic Five-way operating valve (with positioning)
mark	number	changed file number	signature	date	pattern mark	weight	proportion	
designer			approver					
inspector							1:1	
craft					version	visual	angle	
standard			date					
								811200007