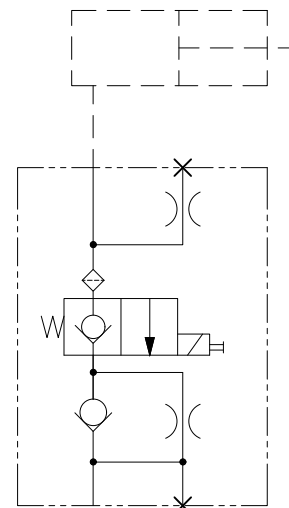
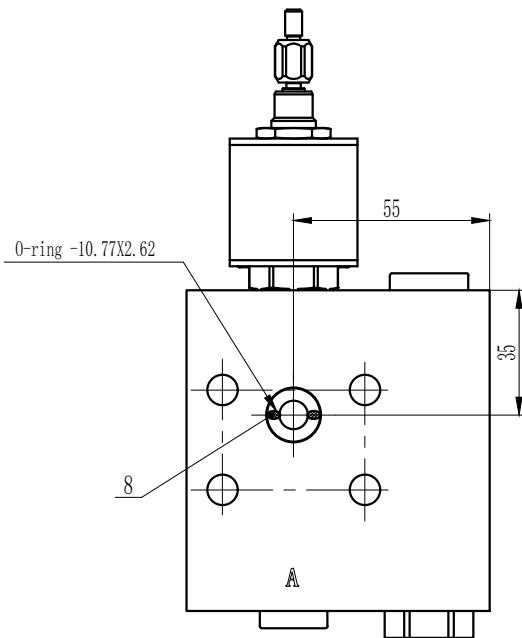
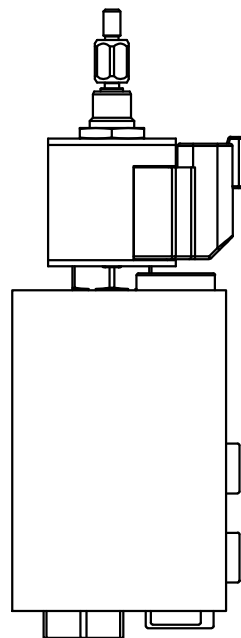
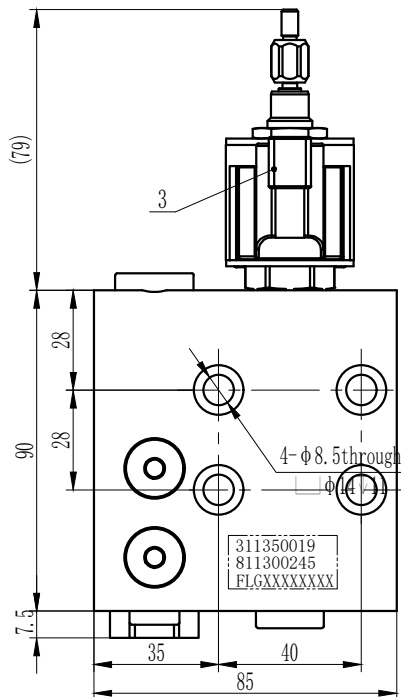
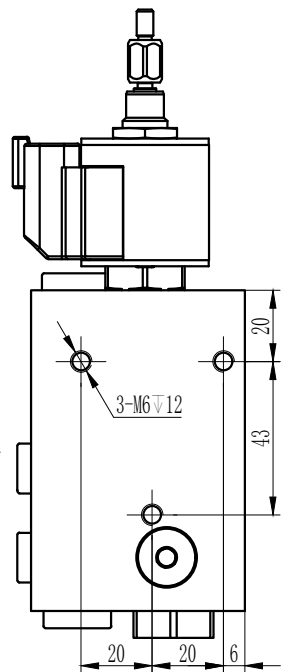
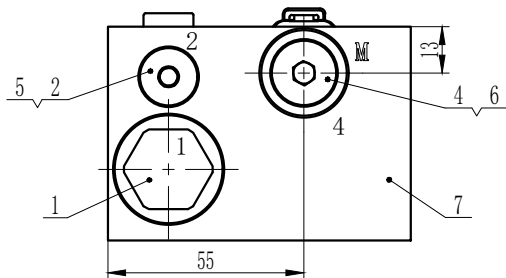


811300245



skills requirement

1. Rated pressure: 207bar;
2. Rated flow: 30L/min;
3. One-way valve opening pressure: 0.3bar;
4. Coil working voltage: 20VDC±15%;  
Connector: DEUTSCH DT04-2P;
5. Oil port thread: A2 and A22 are G3/8 (ED seal);

M is G1/4 (ED seal);  
A is  $\phi 6$ .

借通用件登记

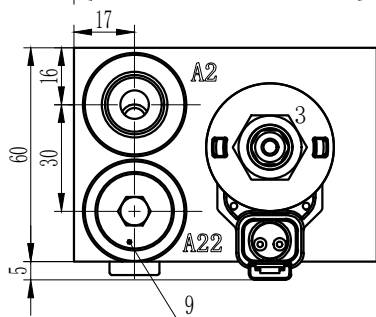
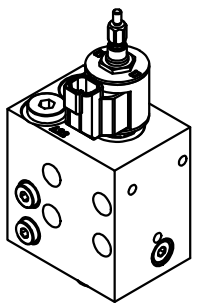
描图

校描

旧底图总号

签字

日期



number	drawing number	name	quantity	material	signal	total weight	remark
5	700700007	M10X1ED cap	4				outsourcing
4	711350087.06	damping M6X6- $\phi 0.6$	1				outsourcing
3	711350160	Solenoid valve ISV08-20I-0-N-20ER	1				flag-up
2	711350086.19	T-damping M6X10- $\phi 1.9$	1				outsourcing
1	711350157	Check valve ICV08-20-0-N-5	1				flag-up

9	700700038	G3/8ED cap	1				outsourcing
8	711320015	O-ring 10.77X2.62	1	NBR 90SH			outsourcing
7	311350019	Lower lift valve block	1	Aluminium alloy 7075-T6			self-control
6	700700002	G1/4ED cap	1				outsourcing

General assembly drawing

Ningbo Flag-up Hydraulic

Lower lift control valve (10 m)

811300245

1:1.5

2023/7/17

version IV visual angle